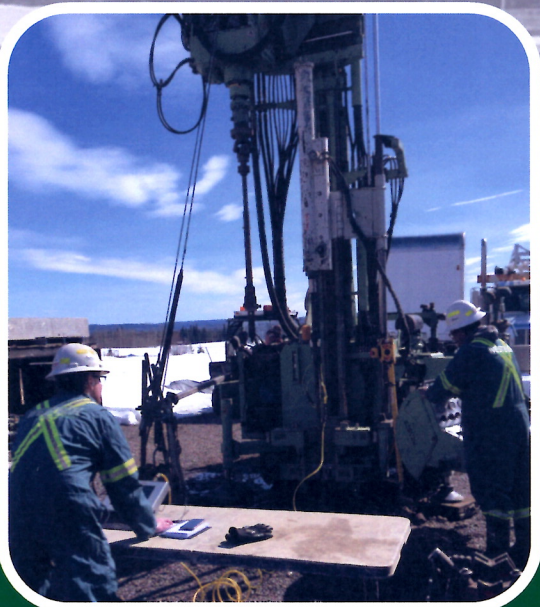




SPT Energy Calibration

Westech CPT offers SPT Hammer Energy calibration services with our industry-leading PDI System. A current hammer calibration on your project's drill rig is an integral part of quality assurance on any geotechnical drilling project. In addition to annual SPTe calibrations on every Westech drill rig, we also offer in-field project services for critical locations such as bridge abutment test holes. Our CPT Management team brings decades of geotechnical drilling, testing and data-collection experience to your project.



Annual Calibration

- **SPTe Calibrated Rig**

- All Westech rig hammer calibrations are current through our annual testing program.
- Reports are available for each Westech rig on your project.

- **Independent SPTe Calibration of Other Contractor Rigs**

- We provide SPTe calibrations in the field on other contractor's rigs that do not have current SPTe testing.
- This could include providing a current SPTe hammer calibration or SPTe services at critical boreholes on your project.



Field Services

- **SPTe Values for Each Sample Taken on Your Project**

- Establish N60 values for each sample taken on your project.
- Account for potential fluctuations in hammer operations.

- **Digital Data Reports**

- Reports generated for each Borehole required on your project.

FOR MORE INFO CALL: 1-855-WT-DRILL OR EMAIL: cpt@westechdrilling.com